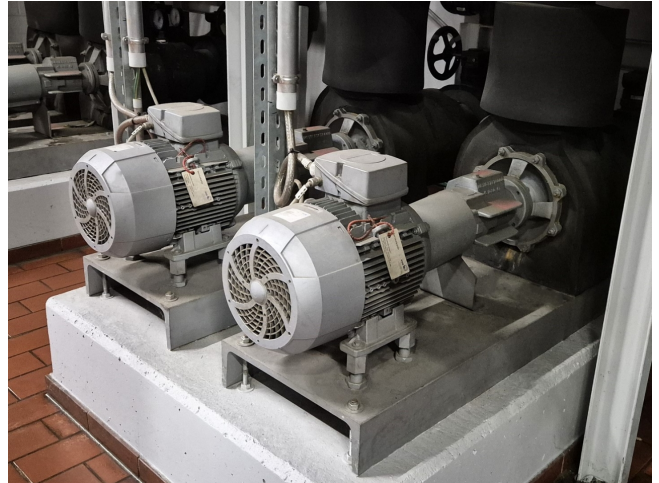


# KSB ETANORM SYT 100-200 SYT8

## Specifications

|   |                             |
|---|-----------------------------|
| Marka   | KSB                         |
| Rodzaj  | ETANORM SYT 100-200<br>SYT8 |
| Przepływ objętościowy Q maks. (m <sup>3</sup> /h) | 113,0                       |
| Wysokość dostawy H maks. (M)                      | 12,5                        |
| Moc maks. (kW)                                    | 5,5                         |
| Remarks   | Y.o.b. 2014                 |
| Stock   | 2                           |



## Description

### Used KSB ETANORM SYT 100-200 SYT8

Used KSB ETANORM SYT 100-200 SYT8 water pump with a KSB 1PC30381CB034CG0 electric motor - 50/60 Hz - 5,5/6,3 kW - 1465/1770 RPM. The pump has the following specifications: Qmax: 113,0 m<sup>3</sup>/h - Hmax: 12,5 m - Pmax: 5,5 kW. Dimensions: 1300x400x750 mm (LxWxH).

